

FRANKLIN & MARSHALL

# February 2006 Statewide Keystone Poll

## SUMMARY OF FINDINGS

**Prepared by:**  
**Center for Opinion Research**  
**Floyd Institute for Public Policy**  
**Franklin & Marshall College**

**BERWOOD A YOST**  
DIRECTOR, FLOYD INSTITUTE FOR PUBLIC POLICY  
DIRECTOR, CENTER FOR OPINION RESEARCH  
HEAD METHODOLOGIST, KEYSTONE POLL

**G. TERRY MADONNA**  
DIRECTOR, CENTER FOR POLITICS AND PUBLIC AFFAIRS  
DIRECTOR, KEYSTONE POLL

**CHRISTINA L ABBOTT**  
ASSISTANT DIRECTOR, CENTER FOR OPINION RESEARCH

**JENNIFER L HARDING**  
MANAGER OF DATA COLLECTION, CENTER FOR OPINION RESEARCH

**ANGELA KNITTLE**  
PROJECT COORDINATOR OF COMMUNITY RESEARCH,  
CENTER FOR OPINION RESEARCH

**February 9, 2006**

**Keystone  Poll**

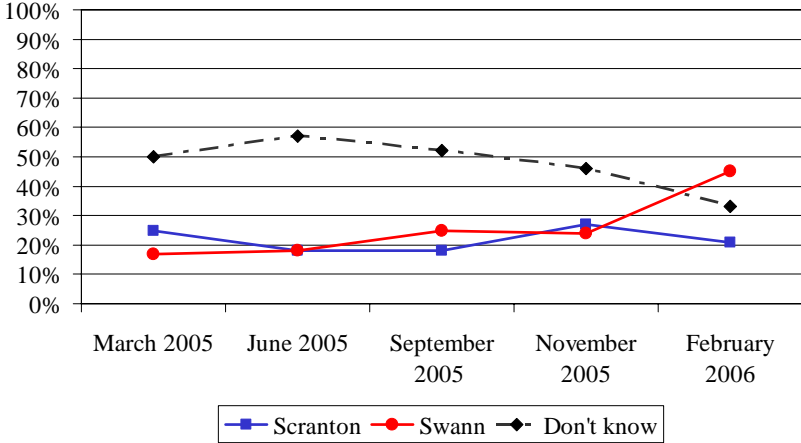
The latest Keystone Poll of Pennsylvania voters conducted from January 31 through February 5 finds significant change in the race for Governor and noticeable stability in the race for the US Senate.

### **The Race for Governor**

The significant change in the Governor's race is the emergence of Lynn Swann as the Republican-primary front runner, even before his primary rival, former Lt. Governor Bill Scranton, dropped out of the race. Swann was leading Scranton by a sizable margin, 45 percent to 21 percent, although a still sizable proportion of Republicans were undecided (33%) at the time of Scranton's withdrawal. In November 2005, Swann and Scranton were in a dead heat, 24 percent to 27 percent, respectively. Swann's improved performance since November is directly attributable to his improved name recognition among Republicans since that time. Currently, 35 percent of Republicans have a favorable opinion of him, only 4 percent have an unfavorable opinion, and 43 percent don't know enough about him to have an opinion. In November 2005, more than half (58%) of Republicans did not know enough about him to have an opinion. Scranton's favorability rating among Republicans had remained stable since November.

**Figure 1 - Republican Primary Race, Time Series**

If the Republican PRIMARY for Governor were being held TODAY and the candidates were Bill Scranton and Lynn Swann would you vote for...



Ed Rendell's advantage over both Swann and Scranton has narrowed considerably since September 2005. In September, Rendell held comfortable, double-digit leads over both Republicans; he now leads them by only three points in head-to-head match ups. Rendell trails both Swann and Scranton in most parts of the state outside of Southeastern Pennsylvania and is having noticeable difficulties among voters in the Southwest and Allegheny County (see Tables A-1 and A-2).

**Table 1 Gubernatorial Vote Choice, Time Series**

| If the election for Pennsylvania governor was being held TODAY and the candidates were <b>Ed Rendell</b> , the Democrat, and <b>Bill Scranton</b> , the Republican, who would you vote for? |                      |                 | If the election for Pennsylvania governor was being held TODAY and the candidates were <b>Ed Rendell</b> , the Democrat, and <b>Lynn Swann</b> , the Republican, who would you vote for? |                   |
|---|----------------------|-----------------|--|-------------------|
| <b>Ed Rendell</b>   | <b>Bill Scranton</b> |                 | <b>Ed Rendell</b>  | <b>Lynn Swann</b> |
| 47%   | 37%                  | Mar 2005        | 59%  | 29%               |
| 41%   | 31%                  | June 2005       | 42%  | 34%               |
| 51%   | 34%                  | Sept 2005       | 53%  | 33%               |
| <b>43%</b>  | <b>40%</b>           | <b>Feb 2006</b> | <b>45%</b>   | <b>42%</b>        |

Rendell's increasing difficulty with his Republican challengers reflects a growing belief among voters that it is time for change in the Governor's office. This sentiment for change is at its highest point in the last year (see Figure 2). About two in five (39%) Pennsylvania voters believes Rendell deserves re-election, but more than half (54%) believe it is time for a change. In March 2005 only 43 percent of the state's voters thought it was time for a change. A majority of voters in every region of the state

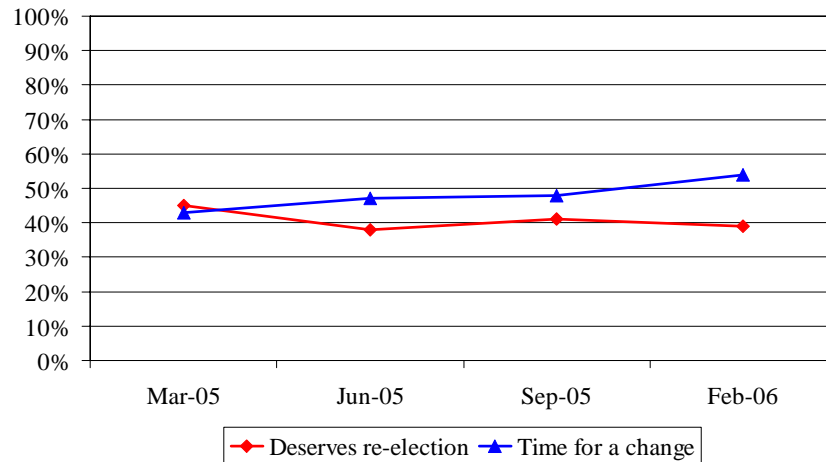
outside of Southeastern Pennsylvania believe that it is time for a change in the Governor's office.

---

**Figure 2 Governor Rendell's Re-elect Numbers, Time Series**

---

Do you believe that Ed Rendell has done a good enough job as governor to deserve re-election, or do you believe it is time for a change?

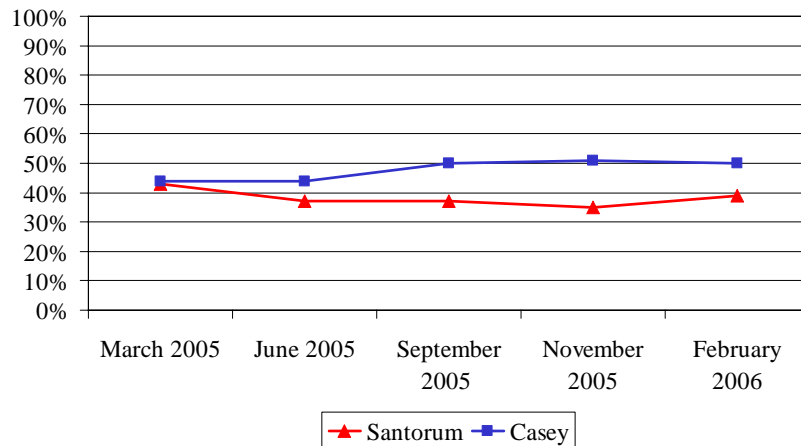


**The US Senate Race**

The US Senate Race in Pennsylvania continues to show incumbent Senator Rick Santorum trailing his likely challenger, State Treasurer Bob Casey, Jr. The Keystone Poll continues to show a double-digit lead for Casey, 50 percent to 39 percent, with one in ten voters (11%) still undecided (see Figure 3). Table A-3 displays voter preferences by selected demographic and attitudinal variables. Defying regional differences in party registration, Casey leads Santorum in every region of Pennsylvania, though narrowly in the Central and Northwestern part of the state.

**Figure 3 Pennsylvania General Election Race, US Senate Time Series**

If the election for Pennsylvania's U.S. Senator were being held TODAY and the candidates were Bob Casey, Jr. and Rick Santorum, would you vote for...



The favorability ratings for both Santorum and Casey, Santorum's job performance ratings, and Santorum's re-elect ratings are important correlates of vote choice. These ratings have

remained very stable since last fall and in large part explain the relative stability of voters' preferences in the race (see Appendix B).

*Methodology: This release summarizes the findings of a survey of 611 adult Pennsylvanians conducted by Franklin and Marshall College's Center for Opinion Research. The survey interviewing was conducted between January 31 and February 5, 2006. The sample error for the survey is plus or minus 4.0 percent. Telephone numbers for the survey were generated via random digit dialing. Respondents were randomly selected from within each household. A second screener was used to determine respondents' voter registration status. The sub-sample of registered voters includes 497 respondents. The registered voter sample has a margin of error of plus or minus 4.4 percent. The final registered voter sample includes 196 Republicans, 235 Democrats, and 56 Independent/other voters (10 voters would not provide their registration). The sample error for the questions asked about the primary races of Republican and Democrat voters is 7.0 and 6.4 percent, respectively. Final survey results were weighted to adjust for different selection probabilities and non-response.*

**Appendix A:**

**Governor and Senate Vote Choice by Demographics**

Table A-1. If the election for Pennsylvania governor was being held TODAY and the candidates were **Ed Rendell**, the Democrat, and **Lynn Swann**, the Republican, who would you vote for?

|   | <b>Ed Rendell</b> | <b>Lynn Swann</b> | <b>Do Not Know</b> |
|---|-------------------|-------------------|--------------------|
| <b>Region</b>                                 |                   |                   |                    |
| Philadelphia                                  | 79%               | 21%               | 0%                 |
| Northeast                                     | 50%               | 36%               | 14%                |
| Allegheny                                     | 35%               | 42%               | 23%                |
| Southwest                                     | 31%               | 60%               | 9%                 |
| Northwest                                     | 31%               | 57%               | 11%                |
| Central                                       | 32%               | 50%               | 18%                |
| Southeast                                     | 57%               | 32%               | 11%                |
| <b>Education</b>                              |                   |                   |                    |
| High School or Less                           | 49%               | 39%               | 12%                |
| Some College                                  | 40%               | 45%               | 15%                |
| College Degree                                | 45%               | 43%               | 12%                |
| <b>Party Registration</b>                     |                   |                   |                    |
| Republican                                    | 19%               | 69%               | 13%                |
| Democrat                                      | 65%               | 22%               | 12%                |
| Independent, Other                            | 57%               | 29%               | 14%                |
| <b>Political Ideology</b>                     |                   |                   |                    |
| Liberal                                       | 76%               | 16%               | 9%                 |
| Moderate                                      | 44%               | 39%               | 17%                |
| Conservative                                  | 27%               | 62%               | 10%                |
| <b>Abortion Stance</b>                        |                   |                   |                    |
| Legal under any circumstances                 | 65%               | 22%               | 13%                |
| Legal under certain circumstances             | 44%               | 46%               | 10%                |
| Illegal in ALL circumstances                  | 22%               | 59%               | 18%                |
| <b>Born Again Christian or Fundamentalist</b> |                   |                   |                    |
| .No   | 51%               | 38%               | 11%                |
| Yes   | 27%               | 56%               | 16%                |
| <b>Racial Background</b>                      |                   |                   |                    |
| White   | 43%               | 45%               | 13%                |
| Nonwhite                                      | 75%               | 18%               | 8%                 |
| <b>Household Income</b>                       |                   |                   |                    |
| Less than \$35,000                            | 51%               | 35%               | 14%                |
| \$35-75,000                                   | 39%               | 50%               | 11%                |
| Over \$75,000                                 | 46%               | 42%               | 12%                |
| <b>Gender</b>                                 |                   |                   |                    |
| Male  | 46%               | 45%               | 10%                |
| Female  | 45%               | 40%               | 16%                |
| <b>Age</b>                                    |                   |                   |                    |
| 18-24   | 66%               | 34%               | 0%                 |
| 25-34   | 44%               | 41%               | 15%                |
| 35-44   | 43%               | 42%               | 15%                |
| 45-54   | 44%               | 42%               | 14%                |
| 55-64   | 43%               | 44%               | 13%                |
| 65 and over                                   | 43%               | 44%               | 13%                |

If the election for Pennsylvania governor was being held TODAY and the candidates were **Ed Rendell**, the Democrat, and **Lynn Swann**, the Republican, who would you vote for?

|                                       | <b>Ed Rendell</b> | <b>Lynn Swann</b> | <b>Do Not Know</b> |
|---------------------------------------|-------------------|-------------------|--------------------|
| <b>Voting Habits</b>                  |                   |                   |                    |
| Straight Democrat                     | 84%               | 16%               | 0%                 |
| Mostly Democrat                       | 72%               | 17%               | 10%                |
| A few more Democrats than Republicans | 57%               | 26%               | 17%                |
| About equally for both parties        | 42%               | 37%               | 21%                |
| A few more Republicans than Democrats | 26%               | 64%               | 10%                |
| Mostly Republican                     | 19%               | 66%               | 14%                |
| Straight Republican                   | 4%                | 88%               | 8%                 |
| <b>Issues of Importance</b>           |                   |                   |                    |
| Social issues                         | 38%               | 52%               | 9%                 |
| Economic issues                       | 47%               | 40%               | 12%                |
| <b>Belief in Evolution</b>            |                   |                   |                    |
| Evolved over time                     | 55%               | 36%               | 9%                 |
| Present form since beginning          | 33%               | 50%               | 17%                |

Table A-2. If the election for Pennsylvania governor was being held TODAY and the candidates were **Ed Rendell**, the Democrat, and **Bill Scranton**, the Republican, who would you vote for?

|   | <b>Ed Rendell</b> | <b>Bill Scranton</b> | <b>Do Not Know</b> |
|---|-------------------|----------------------|--------------------|
| <b>Region</b>                                 |                   |                      |                    |
| Philadelphia                                  | 79%               | 19%                  | 2%                 |
| Northeast                                     | 52%               | 35%                  | 12%                |
| Allegheny                                     | 29%               | 38%                  | 33%                |
| Southwest                                     | 30%               | 54%                  | 17%                |
| Northwest                                     | 31%               | 51%                  | 18%                |
| Central                                       | 26%               | 53%                  | 20%                |
| Southeast                                     | 53%               | 30%                  | 17%                |
| <b>Education</b>                              |                   |                      |                    |
| High School or Less                           | 45%               | 41%                  | 14%                |
| Some College                                  | 40%               | 43%                  | 17%                |
| College Degree                                | 41%               | 38%                  | 20%                |
| <b>Party Registration</b>                     |                   |                      |                    |
| Republican                                    | 18%               | 64%                  | 18%                |
| Democrat                                      | 61%               | 23%                  | 16%                |
| Independent, Other                            | 54%               | 25%                  | 21%                |
| <b>Political ideology</b>                     |                   |                      |                    |
| Liberal                                       | 72%               | 17%                  | 10%                |
| Moderate                                      | 41%               | 37%                  | 21%                |
| Conservative                                  | 25%               | 58%                  | 17%                |
| <b>Abortion Stance</b>                        |                   |                      |                    |
| Legal under any circumstances                 | 68%               | 19%                  | 13%                |
| Legal under certain circumstances             | 40%               | 43%                  | 17%                |
| Illegal in ALL circumstances                  | 19%               | 59%                  | 22%                |
| <b>Born Again Christian or Fundamentalist</b> |                   |                      |                    |
| No  | 48%               | 38%                  | 14%                |
| Yes   | 25%               | 48%                  | 27%                |
| <b>Racial Background</b>                      |                   |                      |                    |
| White   | 39%               | 43%                  | 18%                |
| Nonwhite                                      | 83%               | 12%                  | 5%                 |
| <b>Household Income</b>                       |                   |                      |                    |
| Less than \$35,000                            | 51%               | 34%                  | 15%                |
| \$35-75,000                                   | 38%               | 45%                  | 17%                |
| Over \$75,000                                 | 41%               | 41%                  | 18%                |
| <b>Gender</b>                                 |                   |                      |                    |
| Male  | 42%               | 41%                  | 17%                |
| Female  | 43%               | 39%                  | 18%                |
| <b>Age</b>                                    |                   |                      |                    |
| 18-24   | 66%               | 34%                  | 0%                 |
| 25-34   | 40%               | 31%                  | 30%                |
| 35-44   | 44%               | 40%                  | 16%                |
| 45-54   | 40%               | 42%                  | 18%                |
| 55-64   | 36%               | 45%                  | 19%                |
| 65 and over                                   | 42%               | 45%                  | 14%                |

If the election for Pennsylvania governor was being held TODAY and the candidates were **Ed Rendell**, the Democrat, and **Bill Scranton**, the Republican, who would you vote for?

|                                       | <b>Ed Rendell</b> | <b>Bill Scranton</b> | <b>Do Not Know</b> |
|---------------------------------------|-------------------|----------------------|--------------------|
| <b>Voting Habits</b>                  |                   |                      |                    |
| Straight Democrat                     | 81%               | 19%                  | 0%                 |
| Mostly Democrat                       | 66%               | 15%                  | 19%                |
| A few more Democrats than Republicans | 48%               | 29%                  | 23%                |
| About equally for both parties        | 45%               | 37%                  | 18%                |
| A few more Republicans than Democrats | 17%               | 63%                  | 20%                |
| Mostly Republican                     | 19%               | 60%                  | 21%                |
| Straight Republican                   | 4%                | 84%                  | 12%                |
| <b>Issues of Importance</b>           |                   |                      |                    |
| Social issues                         | 36%               | 42%                  | 22%                |
| Economic issues                       | 45%               | 41%                  | 15%                |
| <b>Belief in Evolution</b>            |                   |                      |                    |
| Evolved over time                     | 50%               | 36%                  | 14%                |
| Present form since beginning          | 33%               | 46%                  | 22%                |

Table A-3. If the election for Pennsylvania's U.S. Senator were being held TODAY and the candidates were **Bob Casey, Jr.**, the Democrat, and **Rick Santorum**, the Republican, would you vote for...

|   | <b>Bob Casey, Jr.</b> | <b>Rick Santorum</b> | <b>Do Not Know</b> |
|---|-----------------------|----------------------|--------------------|
| <b>Region</b>                                 |                       |                      |                    |
| Philadelphia                                  | 69%                   | 28%                  | 3%                 |
| Northeast                                     | 50%                   | 39%                  | 11%                |
| Allegheny                                     | 55%                   | 36%                  | 9%                 |
| Southwest                                     | 50%                   | 42%                  | 8%                 |
| Northwest                                     | 46%                   | 45%                  | 9%                 |
| Central                                       | 41%                   | 38%                  | 21%                |
| Southeast                                     | 48%                   | 43%                  | 8%                 |
| <b>Education</b>                              |                       |                      |                    |
| High School or Less                           | 53%                   | 37%                  | 11%                |
| Some College                                  | 46%                   | 38%                  | 16%                |
| College Degree                                | 50%                   | 41%                  | 9%                 |
| <b>Party Registration</b>                     |                       |                      |                    |
| Republican                                    | 27%                   | 62%                  | 11%                |
| Democrat                                      | 70%                   | 21%                  | 9%                 |
| Independent, Other                            | 50%                   | 32%                  | 18%                |
| <b>Political Ideology</b>                     |                       |                      |                    |
| Liberal                                       | 73%                   | 20%                  | 7%                 |
| Moderate                                      | 56%                   | 30%                  | 14%                |
| Conservative                                  | 28%                   | 63%                  | 9%                 |
| <b>Abortion Stance</b>                        |                       |                      |                    |
| Legal under any circumstances                 | 74%                   | 15%                  | 11%                |
| Legal under certain circumstances             | 48%                   | 42%                  | 11%                |
| Illegal in ALL circumstances                  | 30%                   | 62%                  | 8%                 |
| <b>Born Again Christian or Fundamentalist</b> |                       |                      |                    |
| No  | 56%                   | 34%                  | 11%                |
| Yes   | 36%                   | 52%                  | 13%                |
| <b>Racial Background</b>                      |                       |                      |                    |
| White   | 47%                   | 42%                  | 11%                |
| Nonwhite                                      | 87%                   | 5%                   | 9%                 |
| <b>Household Income</b>                       |                       |                      |                    |
| Less than \$35,000                            | 66%                   | 25%                  | 9%                 |
| \$35-75,000                                   | 50%                   | 39%                  | 11%                |
| Over \$75,000                                 | 45%                   | 47%                  | 8%                 |
| <b>Gender</b>                                 |                       |                      |                    |
| Male  | 45%                   | 44%                  | 10%                |
| Female  | 55%                   | 33%                  | 12%                |
| <b>Age</b>                                    |                       |                      |                    |
| 18-24   | 48%                   | 52%                  | 0%                 |
| 25-34   | 34%                   | 50%                  | 16%                |
| 35-44   | 52%                   | 36%                  | 12%                |
| 45-54   | 46%                   | 40%                  | 14%                |
| 55-64   | 60%                   | 29%                  | 11%                |
| 65 and over                                   | 57%                   | 35%                  | 8%                 |

If the election for Pennsylvania's U.S. Senator were being held TODAY and the candidates were **Bob Casey, Jr.**, the Democrat, and **Rick Santorum**, the Republican, would you vote for...

| <b>Voting Habits</b>        |                                       |     |     |     |
|-----------------------------|---------------------------------------|-----|-----|-----|
|                             | Straight Democrat                     | 87% | 11% | 2%  |
|                             | Mostly Democrat                       | 80% | 8%  | 12% |
|                             | A few more Democrats than Republicans | 64% | 29% | 7%  |
|                             | About equally for both parties        | 45% | 35% | 20% |
|                             | A few more Republicans than Democrats | 38% | 48% | 14% |
|                             | Mostly Republican                     | 20% | 74% | 6%  |
|                             | Straight Republican                   | 6%  | 86% | 8%  |
| <b>Issues of Importance</b> |                                       |     |     |     |
|                             | Social issues                         | 35% | 61% | 5%  |
|                             | Economic issues                       | 54% | 34% | 11% |
| <b>Belief in Evolution</b>  |                                       |     |     |     |
|                             | Evolved over time                     | 57% | 34% | 9%  |
|                             | Present form since beginning          | 42% | 46% | 12% |

**Appendix B:**  
**Marginal Frequency Report**

RightDir. All in all, do you think things in PENNSYLVANIA are generally 'headed in the right direction', or 'off on the wrong track'?

| <i>March</i> | <i>June</i> | <i>Sept</i> | <i>Nov</i>  | <i>Feb</i>  |                           |
|--------------|-------------|-------------|-------------|-------------|---------------------------|
| <u>2005</u>  | <u>2005</u> | <u>2005</u> | <u>2005</u> | <u>2006</u> |                           |
| 50%          | 43%         | 46%         | 39%         | 45%         | Headed in right direction |
| 44%          | 45%         | 46%         | 52%         | 46%         | Off on the wrong track    |
| 6%           | 12%         | 8%          | 10%         | 9%          | Do not know               |

MIP\_PA. First, what do you think is the MOST IMPORTANT problem facing PENNSYLVANIA today?

| <i>March</i> | <i>June</i> | <i>Sept</i> | <i>Nov</i>  | <i>Feb</i>  |   |
|--------------|-------------|-------------|-------------|-------------|---|
| <u>2005</u>  | <u>2005</u> | <u>2005</u> | <u>2005</u> | <u>2006</u> |   |
| 26%          | 24%         | 25%         | 23%         | 23%         | Unemployment, economy, stock market         |
| 15%          | 18%         | 15%         | 16%         | 18%         | Taxes                                       |
| 10%          | 8%          | 9%          | 6%          | 7%          | Education, school                           |
| 8%           | 6%          | 8%          | 8%          | 7%          | Government, politicians                     |
| 8%           | 6%          | 5%          | 5%          | 8%          | Health care                                 |
| 8%           | 4%          | 6%          | 7%          | 6%          | Other                                       |
| 4%           | 6%          | 3%          | 5%          | 8%          | Crime, drugs, violence                      |
| 3%           | 2%          | 2%          | 1%          | 3%          | Roads                                       |
| 3%           | 2%          | 1%          | 3%          | 1%          | Personal finances, paying bills, retirement |
| 2%           | 1%          | 1%          | 2%          | 2%          | Environment                                 |
| 2%           | 4%          | 1%          | 1%          | 1%          | Population, urban sprawl                    |
| 2%           | 1%          | 1%          | 0%          | 0%          | Social security                             |
| 2%           | 3%          | 1%          | 3%          | 1%          | Social issues                               |
| 1%           | 2%          | 0%          | 2%          | 1%          | Transportation                              |
| 1%           | 0%          | 1%          | 0%          | 0%          | Welfare                                     |
| 1%           | 0%          | 0%          | 2%          | 0%          | Housing                                     |
| 1%           | 2%          | 1%          | 0%          | 1%          | Nothing                                     |
| 4%           | 8%          | 8%          | 8%          | 10%         | Don't Know                                  |
| 0%           | 1%          | 1%          | 0%          | 0%          | Terrorism                                   |
| 0%           | 2%          | 2%          | 1%          | 2%          | Act 72, Slot machines                       |
| 0%           | 1%          | 9%          | 3%          | 2%          | Energy Issues - Gas prices, energy crisis   |
| --           | --          | 2%          | 3%          | 0%          | Legislative pay raise                       |
| --           | --          | 1%          | 0%          | 0%          | Justice system                              |
| --           | --          | --          | --          | 1%          | Population loss, movement out of state      |
| --           | --          | --          | --          | 1%          | Values and Morals                           |
| --           | --          | --          | --          | 1%          | Elderly Issues, Aging Population            |

REG. Some people are REGISTERED to vote, and many others are not. Are you CURRENTLY REGISTERED to vote at your present address?

| <i>March</i> | <i>June</i> | <i>Sept</i> | <i>Nov</i>  | <i>Feb</i>  |             |
|--------------|-------------|-------------|-------------|-------------|-------------|
| <u>2005</u>  | <u>2005</u> | <u>2005</u> | <u>2005</u> | <u>2006</u> |             |
| 86%          | 84%         | 79%         | 83%         | 84%         | Yes         |
| 13%          | 16%         | 20%         | 17%         | 16%         | No          |
| 1%           | 0%          | 1%          | 0%          | 0%          | Do not know |

**[QUESTIONS RegPARTY to PolChar1 ASKED ONLY OF REGISTERED VOTERS n=497]**

RegPARTY. Are you currently registered as a Republican, a Democrat, an Independent, or as something else?

| <i>March</i> | <i>June</i> | <i>Sept</i> | <i>Nov</i>  | <i>Feb</i>  |                |
|--------------|-------------|-------------|-------------|-------------|----------------|
| <u>2005</u>  | <u>2005</u> | <u>2005</u> | <u>2005</u> | <u>2006</u> |                |
| 41%          | 44%         | 46%         | 41%         | 40%         | Republican     |
| 48%          | 42%         | 44%         | 46%         | 48%         | Democrat       |
| 9%           | 11%         | 7%          | 12%         | 10%         | Independent    |
| 2%           | 2%          | 2%          | 0%          | 2%          | Something else |
| 1%           | 1%          | 1%          | 1%          | 0%          | Do not know    |

VotParty. Thinking about the last few state and national elections, which best describes how you voted...

| <i>Sept</i> | <i>Nov</i>  | <i>Feb</i>  |                                       |
|-------------|-------------|-------------|---------------------------------------|
| <u>2005</u> | <u>2005</u> | <u>2006</u> |                                       |
| 17%         | 16%         | 13%         | Straight Democrat                     |
| 19%         | 21%         | 23%         | Mostly Democrat                       |
| 7%          | 7%          | 10%         | A few more Democrats than Republicans |
| 16%         | 20%         | 16%         | About equally for both parties        |
| 7%          | 7%          | 5%          | A few more Republicans than Democrats |
| 21%         | 17%         | 19%         | Mostly Republicans                    |
| 10%         | 11%         | 11%         | Straight Republicans                  |
| 4%          | 3%          | 3%          | Do not know                           |

VotIssue. Which kinds of issues are usually more important to you when you are voting....social issues like abortion and gay marriage, or economic issues like poverty, jobs, social security and healthcare?

| <i>Sept</i> | <i>Nov</i>  | <i>Feb</i>  |                        |
|-------------|-------------|-------------|------------------------|
| <u>2005</u> | <u>2005</u> | <u>2006</u> |                        |
| 20%         | 15%         | 19%         | Social issues          |
| 73%         | 67%         | 75%         | Economic issues        |
| --          | 18%         | --          | Both equally important |
| 7%          | 0%          | 5%          | Do not know            |

IDEO. Politically speaking, do you consider yourself to be a liberal, a moderate, or a conservative?

| <i>March</i> | <i>June</i> | <i>Sept</i> | <i>Nov</i>  | <i>Feb</i>  |              |
|--------------|-------------|-------------|-------------|-------------|--------------|
| <u>2005</u>  | <u>2005</u> | <u>2005</u> | <u>2005</u> | <u>2006</u> |              |
| 16%          | 19%         | 22%         | 17%         | 21%         | Liberal      |
| 40%          | 42%         | 38%         | 42%         | 41%         | Moderate     |
| 38%          | 33%         | 35%         | 35%         | 34%         | Conservative |
| 6%           | 7%          | 5%          | 7%          | 4%          | Do not know  |

I'd like to ask you a few questions about some PEOPLE involved in POLITICS today. Please let me know if your opinion of the person is favorable, not favorable, undecided, or if you haven't heard enough about the person to have an opinion.

|                      | Favorable  | Not Favorable | Undecided  | Don't know |
|----------------------|------------|---------------|------------|------------|
| <b>RICK SANTORUM</b> |            |               |            |            |
| <b>February 2006</b> | <b>38%</b> | <b>34%</b>    | <b>13%</b> | <b>15%</b> |
| November 2005        | 38%        | 35%           | 13%        | 14%        |
| September 2005       | 40%        | 32%           | 14%        | 14%        |
| June 2005            | 42%        | 26%           | 13%        | 18%        |
| March 2005           | 39%        | 26%           | 17%        | 18%        |
| November 2003        | 46%        | 25%           | 16%        | 13%        |
| April 2003           | 45%        | 17%           | 14%        | 24%        |
| October 2000         | 40%        | 22%           | 20%        | 18%        |
| July 2000            | 37%        | 17%           | 16%        | 30%        |
| February 2000        | 38%        | 17%           | 24%        | 21%        |
| July 1999            | 41%        | 20%           | 16%        | 24%        |
| October 1997         | 44%        | 18%           | 17%        | 21%        |
| October 1994         | 35%        | 23%           | 12%        | 30%        |
| <b>ED RENDELL</b>    |            |               |            |            |
| <b>February 2006</b> | <b>41%</b> | <b>40%</b>    | <b>14%</b> | <b>5%</b>  |
| November 2005        | 39%        | 38%           | 18%        | 6%         |
| September 2005       | 42%        | 36%           | 16%        | 6%         |
| June 2005            | 41%        | 33%           | 17%        | 9%         |
| March 2005           | 48%        | 28%           | 18%        | 7%         |
| February 2004        | 40%        | 32%           | 13%        | 25%        |
| November 2003        | 46%        | 26%           | 21%        | 7%         |
| April 2003           | 50%        | 19%           | 17%        | 16%        |
| October 2002         | 50%        | 24%           | 18%        | 9%         |
| September 2002       | 43%        | 19%           | 25%        | 14%        |
| June 2002            | 40%        | 18%           | 26%        | 16%        |
| October 2001         | 30%        | 8%            | 13%        | 50%        |
| April 2001           | 29%        | 7%            | 11%        | 52%        |
| June 1999            | 30%        | 8%            | 9%         | 54%        |
| <b>GEORGE BUSH</b>   |            |               |            |            |
| <b>February 2006</b> | <b>38%</b> | <b>50%</b>    | <b>11%</b> | <b>1%</b>  |
| November 2005        | 34%        | 54%           | 11%        | 1%         |
| September 2005       | 39%        | 51%           | 9%         | 1%         |
| June 2005            | 44%        | 45%           | 10%        | 1%         |
| March 2005           | 43%        | 48%           | 8%         | 0%         |
| October 19-23, 2004  | 43%        | 46%           | 10%        | 1%         |
| Sept 30-Oct 3, 2004  | 42%        | 49%           | 9%         | 0%         |
| September 2004       | 46%        | 44%           | 10%        | 0%         |
| August 2004          | 44%        | 46%           | 10%        | 0%         |
| March 2004           | 45%        | 42%           | 12%        | 2%         |
| February 2004        | 46%        | 43%           | 9%         | 3%         |
| November 2003        | 49%        | 40%           | 11%        | 1%         |
| April 2003           | 63%        | 25%           | 10%        | 2%         |
| October 2000         | 43%        | 36%           | 18%        | 3%         |
| July 2000            | 39%        | 35%           | 19%        | 7%         |
| February 2000        | 32%        | 38%           | 24%        | 7%         |
| July 1999            | 38%        | 16%           | 18%        | 28         |

|                      | Favorable  | Not Favorable | Undecided  | Don't know |
|----------------------|------------|---------------|------------|------------|
| <b>BOB CASEY, JR</b> |            |               |            |            |
| <b>February 2006</b> | <b>30%</b> | <b>8%</b>     | <b>16%</b> | <b>45%</b> |
| November 2005        | 30%        | 9%            | 20%        | 40%        |
| September 2005       | 32%        | 7%            | 22%        | 39%        |
| June 2005            | 40%        | 9%            | 15%        | 36%        |
| March 2005           | 33%        | 10%           | 19%        | 38%        |
| October 2001         | 28%        | 7%            | 22%        | 43%        |
| April 2001           | 33%        | 9%            | 22%        | 36%        |
| June 1999            | 29%        | 11%           | 17%        | 44%        |
| <b>LYNN SWANN</b>    |            |               |            |            |
| <b>February 2006</b> | <b>27%</b> | <b>8%</b>     | <b>15%</b> | <b>49%</b> |
| November 2005        | 17%        | 6%            | 17%        | 60%        |
| September 2005       | 16%        | 6%            | 13%        | 65%        |
| June 2005            | 18%        | 6%            | 13%        | 63%        |
| March 2005           | 17%        | 8%            | 12%        | 63%        |
| <b>BILL SCRANTON</b> |            |               |            |            |
| <b>February 2006</b> | <b>19%</b> | <b>7%</b>     | <b>17%</b> | <b>58%</b> |
| November 2005        | 21%        | 8%            | 16%        | 55%        |
| September 2005       | 20%        | 8%            | 17%        | 55%        |
| June 2005            | 21%        | 4%            | 15%        | 60%        |
| March 2005           | 17%        | 6%            | 14%        | 62%        |

**[Question RPrVoGov was only asked of registered Republicans n= 196]**

RPrVoGov. If the Republican PRIMARY for Governor were being held TODAY and the candidates were Bill Scranton, Lynn Swann, and Jim Panyard would you vote for...

| March<br>2005 | June<br>2005 | Sept<br>2005 | Nov<br>2005 | Feb<br>2006 |               |
|---------------|--------------|--------------|-------------|-------------|---------------|
| 8%            | 2%           | 5%           | 3%          | --          | Jeff Piccola  |
| 25%           | 18%          | 18%          | 27%         | 21%         | Bill Scranton |
| 17%           | 18%          | 25%          | 24%         | 45%         | Lynn Swann    |
| --            | --           | 0%           | 0%          | 1%          | Jim Panyard   |
| 50%           | 57%          | 52%          | 46%         | 33%         | Do not know   |

Vote\_Gov.

If the election for Pennsylvania governor was being held TODAY and the candidates were **Ed Rendell**, the Democrat, and **Bill Scranton**, the Republican, who would you vote for?

| March<br>2005 | June<br>2005 | Sept<br>2005 | Feb<br>2006 |               |
|---------------|--------------|--------------|-------------|---------------|
| 47%           | 41%          | 51%          | 43%         | Ed Rendell    |
| 37%           | 31%          | 34%          | 40%         | Bill Scranton |
| 16%           | 28%          | 15%          | 17%         | Do not know   |

If the election for Pennsylvania governor was being held TODAY and the candidates were **Ed Rendell**, the Democrat, and **Lynn Swann**, the Republican, who would you vote for?

| March<br>2005 | June<br>2005 | Sept<br>2005 | Feb<br>2006 |             |
|---------------|--------------|--------------|-------------|-------------|
| 59%           | 42%          | 53%          | 45%         | Ed Rendell  |
| 29%           | 34%          | 33%          | 42%         | Lynn Swann  |
| 12%           | 24%          | 14%          | 13%         | Do not know |

**[Question DPrVoGov was only asked of registered Democrats n=235]**

DPrVoGov. If the Democratic PRIMARY for U.S. Senator were being held TODAY and the candidates were Bob Casey, Chuck Pennacchio, or Alan Sandals, would you vote for...

| <i>Nov</i>  | <i>Feb</i>  |                  |
|-------------|-------------|------------------|
| <u>2005</u> | <u>2006</u> |                  |
| 67%         | 57%         | Bob Casey, Jr.   |
| 5%          | 2%          | Chuck Pennacchio |
| --          | 1%          | Alan Sandals     |
| 28%         | 40%         | Do not know      |

Vote\_Sen. If the election for Pennsylvania's U.S. Senator were being held TODAY and the candidates were Bob Casey, Jr., the Democrat, and Rick Santorum, the Republican, would you vote for...

| <i>March</i> | <i>June</i> | <i>Sept</i> | <i>Nov</i>  | <i>Feb</i>  |                |
|--------------|-------------|-------------|-------------|-------------|----------------|
| <u>2005</u>  | <u>2005</u> | <u>2005</u> | <u>2005</u> | <u>2006</u> |                |
| 44%          | 44%         | 50%         | 51%         | 50%         | Bob Casey, Jr. |
| 43%          | 37%         | 37%         | 35%         | 39%         | Rick Santorum  |
| 13%          | 19%         | 13%         | 14%         | 11%         | Do not know    |

Rate\_Sen. How would you rate the way that RICK SANTORUM is handling his job as US SENATOR? Would you say he is doing...

|                                     | <b>Excellent job</b> | <b>Good job</b> | <b>Only a fair job</b> | <b>Poor job</b> | <b>Do Not Know</b> |
|-------------------------------------|----------------------|-----------------|------------------------|-----------------|--------------------|
| <b>RICK SANTORUM, as US SENATOR</b> |                      |                 |                        |                 |                    |
| <b>February 2006</b>                | <b>8%</b>            | <b>29%</b>      | <b>31%</b>             | <b>22%</b>      | <b>10%</b>         |
| November 2005                       | 7%                   | 28%             | 33%                    | 22%             | 11%                |
| September 2005                      | 7%                   | 31%             | 28%                    | 21%             | 13%                |
| June 2005                           | 9%                   | 34%             | 29%                    | 19%             | 9%                 |
| March 2005                          | 9%                   | 31%             | 30%                    | 16%             | 14%                |
| November 2003                       | 11%                  | 35%             | 28%                    | 14%             | 13%                |
| April 2003                          | 13%                  | 34%             | 22%                    | 10%             | 21%                |
| February 2000                       | 9%                   | 37%             | 26%                    | 8%              | 20%                |
| July 1999                           | 8%                   | 36%             | 27%                    | 12%             | 18%                |

DesRESen. Do you believe that RICK SANTORUM has done a good enough job as US SENATOR to DESERVE RE-ELECTION, or do you believe it is TIME FOR A CHANGE?

|                                     | <b>Deserves re-election</b> | <b>Time for Change</b> | <b>Do Not Know</b> |
|-------------------------------------|-----------------------------|------------------------|--------------------|
| <b>RICK SANTORUM, as US SENATOR</b> |                             |                        |                    |
| <b>February 2006</b>                | <b>36%</b>                  | <b>50%</b>             | <b>13%</b>         |
| November 2005                       | 33%                         | 49%                    | 19%                |
| September 2005                      | 35%                         | 47%                    | 18%                |
| June 2005                           | 42%                         | 42%                    | 16%                |
| March 2005                          | 43%                         | 41%                    | 16%                |
| February 2000                       | 44%                         | 30%                    | 26%                |
| July 1999                           | 34%                         | 38%                    | 28%                |

Cor1. There has been much media coverage recently about lobbying and corruption scandals in Washington. How closely have you been following the news about corruption in Washington...

*Feb*  
2006  
21% Very closely  
47% Somewhat closely  
23% Not too closely  
9% Not at all  
0% Do not know

Cor2. How many members of Congress do you think get involved in corrupt activities...

*Feb*  
2006  
23% Most  
32% Many  
27% Some  
14% Only a Few  
4% Do not know

Cor3. Do you think Pennsylvania Senator Rick Santorum is involved in any of these corrupt activities, or NOT?

*Feb*  
2006  
23% Yes  
41% No  
37% Do not know

Cor4. Regardless of how you plan to vote, do you think Rick Santorum or Bob Casey, Jr. would do a better job of passing laws that FIGHT CORRUPTION?

*Feb*  
2006  
23% Rick Santorum  
36% Bob Casey, Jr.  
8% Both  
4% Neither  
0% Do not know

PatAct1. According to recent reports, the government has been [rotated: investigating people suspected of involvement with terrorists by] secretly listening in on telephone calls and reading e-mails between American citizens and people living outside the United States without first getting court approval to do so. How closely have you been following the news about these reports...

*Feb*  
2006  
47% Very closely  
37% Somewhat closely  
11% Not too closely  
6% Not at all  
0% Do not know

PatAct2. Do you AGREE or DISagree that this wiretapping of telephone calls and e-mails WITHOUT court approval IS an ACCEPTABLE way for the federal government to investigate terrorism?

*Feb*  
2006  
39% Strongly Agree  
15% Somewhat Agree  
10% Somewhat Disagree  
32% Strongly Disagree  
4% Do not know

PatAct3. Regardless of how you plan to vote, do you think Rick Santorum or Bob Casey, Jr. would do a better job of passing laws that will MAKE AMERICA SAFER?

*Feb*  
2006  
30% Rick Santorum  
32% Bob Casey, Jr.  
8% Both  
4% Neither  
27% Do not know

SupCrt1. The US Senate has voted to confirm SAMUEL ALITO to the United States Supreme Court. How closely did you follow the news about the Alito hearings and confirmation...

*Feb*  
2006  
34% Very closely  
34% Somewhat closely  
20% Not too closely  
11% Not at all  
1% Do not know

SupCrt2. Do you believe that Samuel ALITO should have been CONFIRMED by the Senate to serve on the Supreme Court, or NOT?

*Feb*  
2006  
58% Yes  
21% No  
21% Do not know

SupCrt3. Do you think that Democratic Senate Candidate Bob Casey, Jr. would have voted to confirm Samuel Alito if he had been in office, or NOT?

*Feb*  
2006  
22% Yes  
31% No  
48% Do not know

SupCrt4. If you knew that Bob Casey, Jr. WOULD have voted to CONFIRM ALITO had he been in the Senate, would you be MORE likely or LESS likely to vote for him?

*Feb*  
2006  
10% Much more likely  
27% Somewhat more likely  
13% Somewhat less likely  
9% Much less likely  
41% Do not know

Rate\_Gov. How would you rate the way that ED RENDELL is handling his job as GOVERNOR? Would you say he is doing...

|                                | Excellent job | Good job   | Only a fair job | Poor job   | Do Not Know |
|--------------------------------|---------------|------------|-----------------|------------|-------------|
| <b>ED RENDELL, as Governor</b> |               |            |                 |            |             |
| <b>February 2006</b>           | <b>8%</b>     | <b>36%</b> | <b>34%</b>      | <b>21%</b> | <b>1%</b>   |
| September 2005                 | 5%            | 36%        | 38%             | 18%        | 3%          |
| June 2005                      | 6%            | 36%        | 41%             | 14%        | 3%          |
| March 2005                     | 6%            | 33%        | 46%             | 11%        | 4%          |
| February 2004                  | 6%            | 31%        | 44%             | 13%        | 7%          |
| November 2003                  | 7%            | 33%        | 35%             | 15%        | 10%         |
| April 2003                     | 10%           | 36%        | 24%             | 10%        | 21%         |

DesREGov. Do you believe that ED RENDELL has done a good enough job as GOVERNOR to DESERVE RE-ELECTION, or do you believe it is TIME FOR A CHANGE?

| <i>March</i> | <i>June</i> | <i>Sept</i> | <i>Nov</i>  | <i>Feb</i>  |                      |
|--------------|-------------|-------------|-------------|-------------|----------------------|
| <u>2005</u>  | <u>2005</u> | <u>2005</u> | <u>2005</u> | <u>2006</u> |                      |
| 45%          | 38%         | 41%         | --          | 39%         | Deserves re-election |
| 43%          | 47%         | 48%         | --          | 54%         | Time for Change      |
| 12%          | 15%         | 11%         | --          | 7%          | Do Not Know          |

RatePres. How would you RATE the way GEORGE BUSH is handling his job as President? Would you say he is doing...

|                                  | Excellent job | Good job   | Only a fair job | Poor job   | Do Not Know |
|----------------------------------|---------------|------------|-----------------|------------|-------------|
| <b>GEORGE BUSH, as President</b> |               |            |                 |            |             |
| <b>February 2006</b>             | <b>10%</b>    | <b>26%</b> | <b>23%</b>      | <b>40%</b> | <b>1%</b>   |
| September 2005                   | 10%           | 25%        | 24%             | 42%        | 1%          |
| June 2005                        | 12%           | 31%        | 27%             | 30%        | 1%          |
| October 2004                     | 14%           | 27%        | 30%             | 29%        | 0%          |
| September 2004                   | 18%           | 31%        | 27%             | 24%        | 0%          |
| August 2004                      | 16%           | 30%        | 26%             | 28%        | 1%          |
| March 2004                       | 15%           | 34%        | 26%             | 24%        | 1%          |
| February 2004                    | 13%           | 32%        | 26%             | 28%        | 1%          |
| November 2003                    | 15%           | 32%        | 25%             | 28%        | 2%          |
| April 2003                       | 33%           | 31%        | 19%             | 15%        | 2%          |

I now have a final few questions for statistical purposes only.

CNTY. What is the name of the COUNTY you live in?

| <i>Feb</i>  |              |
|-------------|--------------|
| <u>2006</u> |              |
| 12%         | Philadelphia |
| 12%         | Northeast    |
| 11%         | Allegheny    |
| 10%         | Southwest    |
| 9%          | Northwest    |
| 27%         | Central      |
| 20%         | Southeast    |

AGE. What was your AGE on your last birthday?

| <i>Feb</i>  |              |
|-------------|--------------|
| <u>2006</u> |              |
| 13%         | 18-24        |
| 15%         | 25-34        |
| 20%         | 35-44        |
| 19%         | 45-54        |
| 13%         | 55-64        |
| 20%         | 65 and older |

EDUC. What was the last grade level of schooling you have completed?

| <i>Sept</i> |                          |
|-------------|--------------------------|
| <u>2005</u> |                          |
| 5%          | Non high school graduate |
| 35%         | High school graduate     |
| 13%         | Some college             |
| 9%          | Two-year or tech degree  |
| 23%         | Four year college degree |
| 15%         | Postgraduate degree      |

MAR. What is your CURRENT marital status?

| <i>Feb</i>  |                       |
|-------------|-----------------------|
| <u>2006</u> |                       |
| 24%         | Single, Never Married |
| 53%         | Married               |
| 2%          | Separated             |
| 12%         | Divorced              |
| 9%          | Widow, Widower        |

ABORT. Do you think that ABORTION should be...

*Feb*  
2006  
23% Legal under any circumstances,  
57% Legal under certain circumstances, OR  
17% Illegal in ALL circumstances?  
3% Do Not Know

GUN. Are you a gun owner?

*Feb*  
2006  
33% Yes  
67% No

GUN2. Generally speaking, do you favor or oppose creating more laws that regulate gun ownership?

*Feb*  
2006  
35% Strongly favor  
19% Somewhat favor  
17% Somewhat oppose  
22% Strongly oppose  
7% Do not know

REL. Do you consider yourself to be Catholic, Protestant, Jewish or something else?

*Feb*  
2006  
30% Catholic  
35% Protestant  
5% Jewish  
30% Something Else  
0% Do not know

BAC. Do you consider yourself to be a born-again Christian or fundamentalist, or not?

*Feb*  
2006  
34% Yes  
60% No  
4% Do not know

Evol\_1. Some people think that humans and other living things have evolved over time others think humans and other living things have existed in their present form since the beginning of time. Which of these comes closest to your view?

*Feb*  
2006  
48% Have evolved over time  
42% Have existed in their present form since the beginning of time

11% Do not know  
Evol\_2. Do you think that humans and other living things have evolved due to natural processes or do you think that a supreme being guided the evolution of living things?

*Feb*

2006

50% Humans and other living things have evolved due to natural processes  
37% A supreme being guided the evolution of living things  
14% Do not know

Evol\_3. How certain are you about how life developed on Earth...

*Feb*

2006

40% Very certain,  
33% Fairly certain,  
11% Not too certain, or  
13% Not at all certain?  
4% Do not know

Bible. Which of these statements comes closest to describing your feelings about the Bible...

*Feb*

2006

27% The Bible is the actual word of God and is to be taken literally, word  
for word  
51% The Bible is the inspired word of God but not everything in it should be  
taken literally, word for word  
21% The Bible is the inspired book of fables, legends, history and moral  
precepts recorded by men  
1% Do not know

Hisp. Are you Hispanic or Latino?

*Feb*

2006

5% Yes  
95% No

RACE. Which of the following categories best describes your racial background?

*Feb*

2006

89% White  
11% Non-white

WORK. Are you currently working FULL-time, PART-time, going to school, keeping house or what?

| <i>Feb</i>  |                 |
|-------------|-----------------|
| <u>2006</u> |                 |
| 54%         | Full-time       |
| 10%         | Part-time       |
| 5%          | Going to school |
| 5%          | Keeping house   |
| 3%          | Unemployed      |
| 3%          | Disabled        |
| 20%         | Retired         |

INC1. And, just for statistical purposes, we need to know if your total family income is above or below \$30,000 per year?

| <i>Feb</i>  |                |
|-------------|----------------|
| <u>2006</u> |                |
| 17%         | Under \$25,000 |
| 12%         | \$25-\$35,000  |
| 11%         | \$35-50,000    |
| 24%         | \$50-75,000    |
| 14%         | \$75-100,000   |
| 14%         | Over \$100,000 |
| 8%          | Do Not Know    |

DONE. Sex of respondent:

| <i>Feb</i>  |        |
|-------------|--------|
| <u>2006</u> |        |
| 48%         | Male   |
| 52%         | Female |