

August 2006 Statewide Keystone Poll

SUMMARY OF FINDINGS

Prepared by:
Center for Opinion Research
Floyd Institute for Public Policy
Franklin & Marshall College

BERWOOD A YOST
DIRECTOR, FLOYD INSTITUTE FOR PUBLIC POLICY
DIRECTOR, CENTER FOR OPINION RESEARCH
HEAD METHODOLOGIST, KEYSTONE POLL

G. TERRY MADONNA
DIRECTOR, CENTER FOR POLITICS AND PUBLIC AFFAIRS
DIRECTOR, KEYSTONE POLL

CHRISTINA L ABBOTT
ASSISTANT DIRECTOR, CENTER FOR OPINION RESEARCH

JENNIFER L HARDING
PROJECT MANAGER, CENTER FOR OPINION RESEARCH

ANGELA KNITTLE
PROJECT MANAGER, CENTER FOR OPINION RESEARCH

August 23, 2006

Keystone  Poll

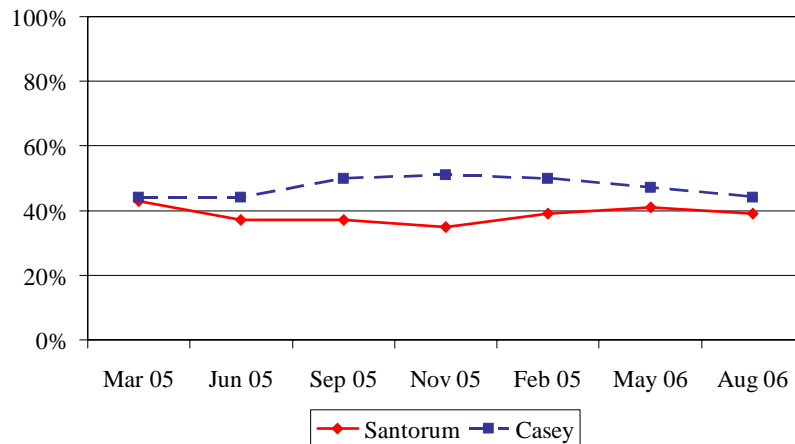
FRANKLIN & MARSHALL

The U.S. Senate Race in Pennsylvania

The latest Keystone Poll of Pennsylvania voters finds Democratic challenger Robert Casey, Jr. leading incumbent Republican Senator Rick Santorum by five points, 44 to 39 percent. Green Party challenger Carl Romanelli is supported by less than one in twenty (4%) voters. One in seven (13%) registered voters are undecided in the race. The race has remained mostly stable since the May 2006 Keystone Poll (see Figure 1).

Figure 1 Pennsylvania U.S. Senate Race, Time Series

If the election for Pennsylvania's U.S. Senator was being held today and the candidates were Bob Casey, Jr., the Democrat, and Rick Santorum, the Republican, and Carl Romanelli, the Green Party candidate would you vote for...



The most important fundamentals of the Senate race have changed little since May--Santorum's favorability and job performance ratings have remained unchanged despite the deployment of a significant advertising campaign over the

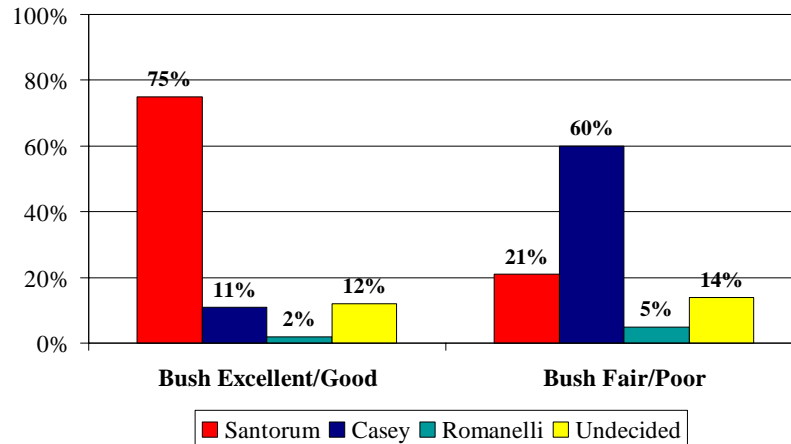
summer. Nearly seven in ten (69%) of the state's voters have seen a Santorum advertisement while less than half (43%) have seen a Casey campaign advertisement. Perhaps the most important finding here is how the ads have functioned among partisans: Republicans who have seen the Santorum ads and Democrats who have seen the Casey ads indicate they are more likely to vote for their party's candidate and are less likely to fall in the undecided column. Simply put, at this point the advertising has helped to reinforce partisan ties among the partisans who have seen the ads.

Another persistent factor in the race is President Bush's low job performance ratings in Pennsylvania. Only one in three (33%) Pennsylvanians' believes the President has done an excellent or good job in office while the balance believes he has done only a fair or poor job. Three-quarters (75%) of those who believe the President is doing an excellent or good job plan to vote for Senator Santorum; three in five (60%) of those who think the President is doing only a fair or poor job are planning to vote for Bob Casey (see Figure 2).

.

Figure 2 Pennsylvania U.S. Senate Preference by Presidential Job Approval

If the election for Pennsylvania's U.S. Senator was being held today and the candidates were Bob Casey, Jr., the Democrat, and Rick Santorum, the Republican, and Carl Romanelli, the Green Party candidate would you vote for...



The major changes in the race are the slightly increased unfavorable ratings for Bob Casey, the addition of Green candidate Carl Romanelli to the race, and a narrowing of the partisan gap between the candidates. Romanelli does not appear to draw a significant number of Democratic voters from Casey; instead more independent voters (10%) than Republicans or Democrats are planning to vote for him. Seven in ten Republicans currently plan to support Santorum and seven in ten Democrats plan to vote for Casey--in the May survey, Bob Casey attracted a greater share of Democrats than Rick Santorum did Republicans.

The war in Iraq (27%), the war on terrorism (20%), and the economy (20%) are the primary issues that are driving voters' Senate choices this year. Casey leads Santorum among those who say that Iraq, the economy, gas prices, and health care are their primary concerns. Santorum leads among those who believe the war on terror and immigration are the most important issues in the Senate race.

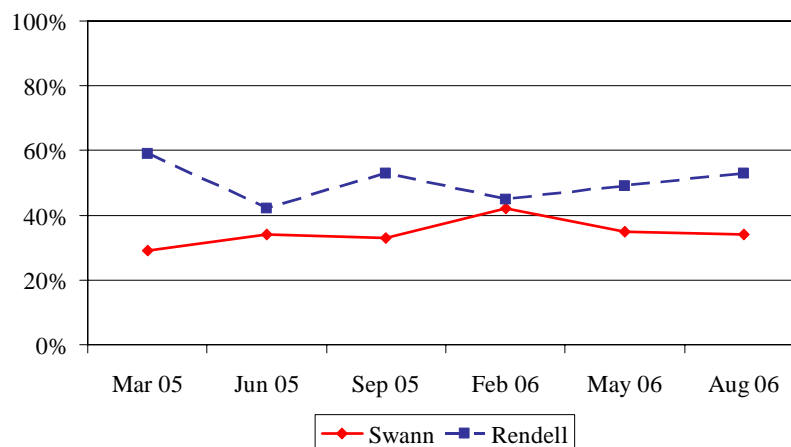
The U.S. Senate race in Pennsylvania still appears to favor the Democratic challenger. Senator Santorum has been unable to drive his personal ratings (favorability and job performance) higher despite a sizable advertising campaign. The President's unpopularity in the state is also a problem for Senator Santorum and it appears that the major issues of importance to the state's voters also run counter to Santorum's strengths. Santorum has managed to drive up Casey's unfavorable ratings and the addition of the Green Party candidate could hurt Casey among some independent voters, but Santorum's inability to drive his support much above 40 percent in any recent polling (and at below 40 percent in this poll) must be a major concern for his campaign.

The Pennsylvania Governor's Race

Democratic incumbent governor Ed Rendell continues to hold a comfortable lead over his Republican challenger Lynn Swann, 53% to 34%. Rendell's job performance ratings remain positive (50 percent believe he has done an excellent or good job in office and 48 percent believe he has done only a fair or poor job) as does his favorability rating (49 percent favorable to 33 percent unfavorable). Swann's favorability ratings have changed little over the summer. Rendell appears well-positioned for the beginning of the fall campaign.

Figure 3 Pennsylvania Gubernatorial Preference, Time Series

If the election for Pennsylvania governor was being held today and the candidates were Ed Rendell, the Democrat, and Lynn Swann, the Republican, would you vote for...



Methodology: This release summarizes the findings of a survey of 551 registered voters living in Pennsylvania conducted by Franklin and Marshall College's Center for Opinion Research. The survey interviewing was conducted between August 16 and 21, 2006. The

sample error for the survey is plus or minus 4.2 percent. Telephone numbers for the survey were generated via random digit dialing. Respondents were randomly selected from within each household and a screener was used to determine respondents' voter registration status. The final sample includes 233 Republicans, 243 Democrats, and 62 Independent/other voters (6 voters would not provide their registration).

Appendix A:

Governor and Senate Vote Choice by Demographics

Table A-1. If the election for Pennsylvania governor was being held today and the candidates were **Ed Rendell**, the Democrat, and **Lynn Swann**, the Republican, who would you vote for?

	Ed Rendell	Lynn Swann	Do Not Know
Region			
Philadelphia	78%	12%	10%
Northeast	55%	30%	16%
Allegheny	52%	37%	11%
Southwest	39%	46%	15%
Northwest	49%	49%	2%
Central	40%	41%	18%
Southeast	70%	21%	9%
Education			
High School or Less	57%	27%	16%
Some College	50%	40%	10%
College Degree	52%	37%	12%
Party Registration			
Republican	32%	55%	14%
Democrat	74%	15%	11%
Independent, Other	56%	29%	15%
Political Ideology			
Liberal	83%	10%	7%
Moderate	60%	29%	11%
Conservative	32%	52%	17%
Abortion Stance			
Legal under any circumstances	72%	21%	7%
Legal under certain circumstances	51%	35%	14%
Illegal in ALL circumstances	35%	50%	15%
Born Again Christian or Fundamentalist			
No	58%	30%	11%
Yes	37%	46%	18%
Racial Background			
White	51%	36%	13%
Nonwhite	75%	13%	13%
Household Income			
Less than \$35,000	57%	27%	16%
\$35-75,000	48%	38%	14%
Over \$75,000	54%	38%	8%
Gender			
Male	51%	36%	12%
Female	54%	32%	14%
Age			
18-24	71%	24%	6%
25-34	58%	30%	12%
35-44	43%	48%	9%
45-54	52%	35%	12%
55-64	48%	38%	14%
65 and over	57%	26%	17%

If the election for Pennsylvania governor was being held today and the candidates were **Ed Rendell**, the Democrat, and **Lynn Swann**, the Republican, who would you vote for?

	Ed Rendell	Lynn Swann	Do Not Know
Voting Habits			
Straight Democrat	81%	10%	10%
Mostly Democrat	82%	14%	5%
A few more Democrats than Republicans	65%	24%	12%
About equally for both parties	48%	32%	20%
A few more Republicans than Democrats	40%	43%	17%
Mostly Republican	28%	58%	14%
Straight Republican	11%	79%	11%

Table A-2. If the election for U.S. Senate was being held today and the candidates were **Rick Santorum**, the Republican, **Bob Casey, Jr.**, the Democrat, and **Carl Romanelli**, the Green Party Candidate, who would you vote for?

	Rick Santorum	Bob Casey Jr.	Carl Romanelli	Do Not Know
Region				
Philadelphia	25%	53%	4%	18%
Northeast	40%	46%	5%	9%
Allegheny	28%	56%	2%	15%
Southwest	42%	43%	1%	13%
Northwest	49%	41%	2%	7%
Central	45%	35%	6%	14%
Southeast	38%	46%	3%	13%
Education				
High School or Less	37%	42%	3%	18%
Some College	43%	43%	4%	9%
College Degree	39%	45%	5%	11%
Party Registration				
Republican	70%	17%	3%	10%
Democrat	13%	70%	3%	14%
Independent, Other	28%	40%	10%	22%
Political Ideology				
Liberal	13%	72%	8%	7%
Moderate	28%	54%	3%	15%
Conservative	65%	21%	2%	12%
Abortion Stance				
Legal under any circumstances	23%	55%	8%	15%
Legal under certain circumstances	39%	45%	3%	13%
Illegal in ALL circumstances	62%	24%	2%	12%
Born Again Christian or Fundamentalist				
No	34%	47%	5%	14%
Yes	57%	31%	2%	10%
Racial Background				
White	41%	42%	4%	13%
Nonwhite	19%	56%	4%	21%
Household Income				
Less than \$35,000	29%	50%	2%	19%
\$35-75,000	46%	41%	2%	11%
Over \$75,000	44%	41%	6%	9%
Gender				
Male	46%	40%	3%	11%
Female	34%	47%	4%	15%
Age				
18-24	41%	47%	0%	12%
25-34	40%	34%	6%	20%
35-44	46%	34%	4%	16%
45-54	36%	47%	4%	13%
55-64	47%	43%	5%	6%
65 and over	34%	49%	2%	15%

If the election for U.S. Senate was being held today and the candidates were **Rick Santorum**, the Republican, **Bob Casey, Jr.**, the Democrat, and **Carl Romanelli**, the Green Party Candidate, who would you vote for?

	Rick Santorum	Bob Casey Jr.	Carl Romanelli	Do Not Know
Voting Habits				
Straight Democrat	8%	73%	4%	15%
Mostly Democrat	7%	81%	4%	8%
A few more Democrats than Republicans	18%	53%	6%	24%
About equally for both parties	32%	48%	3%	16%
A few more Republicans than Democrats	63%	29%	0%	9%
Mostly Republican	80%	5%	6%	9%
Straight Republican	88%	3%	0%	8%

Appendix B:
Marginal Frequency Report

RegPARTY. Are you currently registered as a Republican, a Democrat, an Independent, or as something else?

<i>March</i>	<i>June</i>	<i>Sept</i>	<i>Nov</i>	<i>Feb</i>	<i>May</i>	<i>August</i>	
<u>2005</u>	<u>2005</u>	<u>2005</u>	<u>2005</u>	<u>2006</u>	<u>2006</u>	<u>2006</u>	
41%	44%	46%	41%	40%	47%	43%	Republican
48%	42%	44%	46%	48%	43%	45%	Democrat
9%	11%	7%	12%	10%	7%	9%	Independent
2%	2%	2%	0%	2%	2%	2%	Something else
1%	1%	1%	1%	0%	1%	1%	Do not know

Vote_Nov. Many people will vote in the primary election for Governor and US Senate in November 2006; however, many other people will not. What would you say are the chances of your voting in the November 2006 primary election? Are you...

<i>Nov</i>	<i>May</i>	<i>August</i>	
<u>2005</u>	<u>2006</u>	<u>2006</u>	
72%	62%	75%	Certain to vote
18%	19%	14%	Will you probably vote
7%	10%	7%	Are the chances fifty-fifty you will vote
2%	8%	3%	Don't you think that you will vote in the November 2006 election
1%	1%	1%	Do not know

Pol_Int. Some people don't pay much attention to political campaigns. How about you? Would you say that you are...

<i>Nov</i>	<i>May</i>	<i>August</i>	
<u>2005</u>	<u>2006</u>	<u>2006</u>	
32%	40%	45%	Very much interested
52%	48%	47%	Somewhat interested
16%	12%	8%	Not very interested in the November 2006 election

VotParty. Thinking about the last few state and national elections, which best describes how you voted...

<i>Sept</i>	<i>Nov</i>	<i>Feb</i>	<i>May</i>	<i>August</i>	
<u>2005</u>	<u>2005</u>	<u>2006</u>	<u>2006</u>	<u>2006</u>	
17%	16%	13%	13%	17%	Straight Democrat
19%	21%	23%	21%	20%	Mostly Democrat
7%	7%	10%	7%	6%	A few more Democrats than Republicans
16%	20%	16%	13%	16%	About equally for both parties
7%	7%	5%	7%	7%	A few more Republicans than Democrats
21%	17%	19%	23%	20%	Mostly Republicans
10%	11%	11%	12%	11%	Straight Republicans
4%	3%	3%	3%	3%	Do not know

RightDir. All in all, do you think things in PENNSYLVANIA are generally headed in the RIGHT DIRECTION, or do you feel that things are off on the WRONG TRACK?

<i>March</i>	<i>June</i>	<i>Sept</i>	<i>Nov</i>	<i>Feb</i>	<i>August</i>	
<u>2005*</u>	<u>2005*</u>	<u>2005*</u>	<u>2005*</u>	<u>2006*</u>	<u>2006</u>	
50%	43%	46%	39%	45%	50%	Headed in right direction
44%	45%	46%	52%	46%	40%	Off on the wrong track
6%	12%	8%	10%	9%	10%	Do not know

* Asked of all survey respondents regardless of registration status

MIP_PA. What do you think is the MOST IMPORTANT problem facing PENNSYLVANIA TODAY?

<i>March</i> <u>2005*</u>	<i>June</i> <u>2005*</u>	<i>Sept</i> <u>2005*</u>	<i>Nov</i> <u>2005*</u>	<i>Feb</i> <u>2006*</u>	<i>August</i> <u>2006</u>	
15%	18%	15%	16%	18%	18%	Taxes
26%	24%	25%	23%	23%	17%	Unemployment, economy, stock market
10%	8%	9%	6%	7%	10%	Education, school
4%	6%	3%	5%	8%	8%	Crime, drugs, violence
4%	8%	8%	8%	10%	8%	Don't Know
8%	6%	8%	8%	7%	7%	Government, politicians
8%	6%	5%	5%	8%	7%	Health care, insurance
8%	4%	6%	7%	6%	5%	Other
2%	1%	1%	0%	1%	4%	Social security, elder issues
0%	2%	2%	1%	2%	4%	Act 72, Slot machines
2%	1%	1%	2%	2%	2%	Environment
2%	3%	1%	3%	1%	2%	Social issues
0%	1%	9%	3%	2%	2%	Energy Issues - Gas prices, energy crisis
3%	2%	2%	1%	3%	1%	Roads, transportation
2%	4%	1%	1%	1%	1%	Population, urban sprawl
1%	0%	1%	0%	0%	1%	Welfare
0%	1%	1%	0%	0%	1%	Terrorism, war, foreign policy
0%	0%	2%	3%	0%	1%	Legislative pay raise
0%	0%	0%	0%	1%	1%	Values and Morals
0%	0%	0%	0%	0%	1%	Iraq war
0%	0%	0%	0%	0%	1%	Retaining and attracting businesses
0%	0%	0%	0%	0%	1%	Immigration
3%	2%	1%	3%	1%	0%	Personal finances, paying bills, retirement
1%	2%	0%	2%	1%	0%	Transportation, Public
1%	0%	0%	2%	0%	0%	Housing and Real Estate
1%	2%	1%	0%	1%	0%	Nothing
0%	0%	1%	0%	0%	0%	Justice system
0%	0%	0%	0%	1%	0%	Population loss, movement out of state

* Asked of all survey respondents regardless of registration status

IntFavC. I'd like to ask you a few questions about some people involved in politics today. Please let me know if your opinion of the person is favorable, not favorable, undecided, or if you haven't heard enough about the person to have an opinion.

	Favorable	Not Favorable	Undecided	Don't know
RICK SANTORUM				
August 2006	37%	37%	16%	10%
May 2006	39%	33%	17%	11%
February 2006	38%	34%	13%	15%
November 2005	38%	35%	13%	14%
September 2005	40%	32%	14%	14%
June 2005	42%	26%	13%	18%
March 2005	39%	26%	17%	18%
November 2003	46%	25%	16%	13%
April 2003	45%	17%	14%	24%
October 2000	40%	22%	20%	18%
July 2000	37%	17%	16%	30%
February 2000	38%	17%	24%	21%
July 1999	41%	20%	16%	24%
October 1997	44%	18%	17%	21%
October 1994	35%	23%	12%	30%
ED RENDELL				
August 2006	49%	33%	14%	4%
May 2006	48%	32%	16%	4%
February 2006	41%	40%	14%	5%
November 2005	39%	38%	18%	6%
September 2005	42%	36%	16%	6%
June 2005	41%	33%	17%	9%
March 2005	48%	28%	18%	7%
February 2004	40%	32%	13%	25%
November 2003	46%	26%	21%	7%
April 2003	50%	19%	17%	16%
October 2002	50%	24%	18%	9%
September 2002	43%	19%	25%	14%
June 2002	40%	18%	26%	16%
October 2001	30%	8%	13%	50%
April 2001	29%	7%	11%	52%
June 1999	30%	8%	9%	54%
GEORGE BUSH				
August 2006	36%	57%	6%	1%
May 2006	33%	53%	13%	1%
February 2006	38%	50%	11%	1%
November 2005	34%	54%	11%	1%
September 2005	39%	51%	9%	1%
June 2005	44%	45%	10%	1%
March 2005	43%	48%	8%	0%
October 19-23, 2004	43%	46%	10%	1%
Sept 30-Oct 3, 2004	42%	49%	9%	0%
September 2004	46%	44%	10%	0%
August 2004	44%	46%	10%	0%
March 2004	45%	42%	12%	2%
February 2004	46%	43%	9%	3%
November 2003	49%	40%	11%	1%

	Favorable	Not Favorable	Undecided	Don't know
April 2003	63%	25%	10%	2%
October 2000	43%	36%	18%	3%
July 2000	39%	35%	19%	7%
February 2000	32%	38%	24%	7%
July 1999	38%	16%	18%	28
BOB CASEY, JR				
August 2006	31%	20%	18%	31%
May 2006	30%	13%	20%	37%
February 2006	30%	8%	16%	45%
November 2005	30%	9%	20%	40%
September 2005	32%	7%	22%	39%
June 2005	40%	9%	15%	36%
March 2005	33%	10%	19%	38%
October 2001	28%	7%	22%	43%
April 2001	33%	9%	22%	36%
June 1999	29%	11%	17%	44%
LYNN SWANN				
August 2006	27%	22%	16%	35%
May 2006	29%	15%	19%	37%
February 2006	27%	8%	15%	49%
November 2005	17%	6%	17%	60%
September 2005	16%	6%	13%	65%
June 2005	18%	6%	13%	63%
March 2005	17%	8%	12%	63%

Vote_Sen. If the election for Pennsylvania's U.S. Senator was being held today and the candidates were Bob Casey, Jr., the Democrat, and Rick Santorum, the Republican, and Carl Romanelli, the Green Party candidate would you vote for...

<i>March</i>	<i>June</i>	<i>Sept</i>	<i>Nov</i>	<i>Feb</i>	<i>May</i>	<i>August</i>	
<u>2005</u>	<u>2005</u>	<u>2005</u>	<u>2005</u>	<u>2006</u>	<u>2006</u>	<u>2006</u>	
44%	44%	50%	51%	50%	47%	44%	Bob Casey, Jr.
43%	37%	37%	35%	39%	41%	39%	Rick Santorum
--	--	--	--	--	--	4%	Carl Romanelli
13%	19%	13%	14%	11%	12%	13%	Do not know

Cert_Sen. Are you absolutely CERTAIN you will vote FOR [fill Vote_Sen] in the election, or are you still making up your mind?

August
2006

n = 474

64% Certain
 36% Still making up mind

Lean_Sen. As of today, do you lean more to Bob Casey, Jr., the Democrat, and Rick Santorum, the Republican, or Carl Romanelli, the Green Party candidate?

August
2006

n = 77

19%	Bob Casey, Jr.
16%	Rick Santorum
0%	Carl Romanelli
65%	Do not know

ReaS_Sen. What is the MAIN Reason you plan to vote for [fill Vote_Sen/Lean_Sen], is it because...

August
2006

n = 500

5%	You like him as a person.
45%	You prefer his stand on some issues
23%	You dislike the other candidates
13%	You usually vote for [fill PARTY]
12%	For some other reason
2%	Do Not Know

Against. Are you voting mainly...

August
2006

n = 253

23%	For Bob Casey Jr
26%	Against Rick Santorum

n = 226

37%	For Rick Santorum
6%	Against Bob Casey Jr
8%	Do Not Know

Iss_Sen. What will be the single MOST IMPORTANT ISSUE in your vote for US Senate this year...

August

2006

20%	The US campaign against terrorism
27%	The war in Iraq
20%	The economy
7%	Immigration
7%	Gas prices
9%	Health care
8%	Something else
2%	Do Not Know

SenSPres. REGARDLESS of how you might vote, do you think RICK SANTORUM votes to SUPPORT President Bush's policies TOO OFTEN, or NOT?

August

2006

46%	Yes
28%	No
26%	Do Not Know

STalkI. What issue do you MOST want to hear the candidates for US SENATE talk about?

August

2006

18%	Unemployment, economy, stock market
14%	Terrorism, war, foreign policy
13%	Iraq war
8%	Health care, insurance
7%	Don't Know
6%	Immigration
5%	Energy Issues - Gas prices, energy crisis
4%	Taxes
4%	Education, school
4%	Government, politicians
4%	Other
3%	Crime, drugs, violence
3%	Nothing
2%	Social security, elder issues
2%	Civil liberties
1%	Environment
1%	Social issues
1%	Values and Morals
1%	Improve PA and life of citizens

AdCas. Have you seen any advertisements for BOB CASEY, JR., or NOT?

August

2006

43%	Yes
54%	No
3%	Do Not Know

AdCasY. Have the advertisements you've seen for BOB CASEY, JR. made you...

August
2006

n = 235

12% MUCH MORE likely to vote for him
 25% Somewhat MORE likely to vote for him
 12% Somewhat LESS likely to vote for him
 13% MUCH LESS likely to vote for him
 35% Made No difference
 3% Do Not Know

AdSan. Have you seen any advertisements for RICK SANTORUM., or NOT?

August
2006

69% Yes
 29% No
 2% Do Not Know

AdSanY. Have the advertisements you've seen for RICK SANTORUM. made you...

August
2006

n = 380

10% MUCH MORE likely to vote for him
 22% Somewhat MORE likely to vote for him
 12% Somewhat LESS likely to vote for him
 25% MUCH LESS likely to vote for him
 29% Made No difference
 2% Do Not Know

Vote_Gov. If the election for Pennsylvania governor was being held today and the candidates were Ed Rendell, the Democrat, Lynn Swann, the Republican, who would you vote for?

<i>March</i> <u>2005</u>	<i>June</i> <u>2005</u>	<i>Sept</i> <u>2005</u>	<i>Feb</i> <u>2006</u>	<i>May</i> <u>2006</u>	<i>August</i> <u>2006</u>	
59%	42%	53%	45%	49%	53%	Ed Rendell
29%	34%	33%	42%	35%	34%	Lynn Swann
12%	24%	14%	13%	13%	13%	Do not know

Cert_Sen. Are you absolutely CERTAIN you will vote FOR [fill Vote_Gov] in the election, or are you still making up your mind?

August
2006

n = 473

74% Certain
 26% Still making up mind

Lean_Sen. As of today, do you lean more to Ed Rendell, the Democrat, Lynn Swann, or the Republican candidate?

August
2006

n = 78

21%	Ed Rendell
25%	Lynn Swann
54%	Do not know

GTalkI. What issue do you MOST want to hear the candidates for GOVERNOR talk about?

August
2006

25%	Unemployment, economy, stock market
16%	Taxes
9%	Education, school
9%	Health care, insurance
7%	Don't Know
5%	Other
4%	Government, politicians
4%	Nothing
3%	Crime, drugs, violence
3%	Terrorism, war, foreign policy
3%	Energy Issues - Gas prices, energy crisis
2%	Social security, elder issues
2%	Act 72, Slot machines
2%	Immigration
2%	Improve PA and life of citizens
1%	Environment
1%	Social issues
1%	Values and Morals
1%	Iraq war
1%	Retaining and attracting businesses
1%	Civil liberties

HRepPrtV. If the 2006 election for the US HOUSE of REPRESENTATIVES was being held TODAY, would you vote for the Republican Party's candidate or the Democratic Party's candidate for the House in your district?

August
2006

33%	Republican Party's candidate
40%	Democratic Party's candidate
3%	Neither
24%	Do Not Know

RatePres. How would you rate the way George Bush is handling his job as President? Would you say he is doing...

	Excellent job	Good job	Only a fair job	Poor job	Do Not Know
GEORGE BUSH, as President					
August 2006	9%	24%	24%	43%	0%
May 2006	7%	23%	24%	45%	1%
February 2006*	10%	26%	23%	40%	1%
September 2005	10%	25%	24%	42%	1%
June 2005	12%	31%	27%	30%	1%
October 2004	14%	27%	30%	29%	0%
September 2004	18%	31%	27%	24%	0%
August 2004	16%	30%	26%	28%	1%
March 2004	15%	34%	26%	24%	1%
February 2004	13%	32%	26%	28%	1%
November 2003	15%	32%	25%	28%	2%
April 2003	33%	31%	19%	15%	2%

Rate_Sen. How would you rate the way that Rick Santorum is handling his job as US Senator? Would you say he is doing...

	Excellent job	Good job	Only a fair job	Poor job	Do Not Know
RICK SANTORUM, as US SENATOR					
August 2006	8%	27%	35%	22%	8%
May 2006	6%	29%	36%	20%	9%
February 2006*	8%	29%	31%	22%	10%
November 2005	7%	28%	33%	22%	11%
September 2005	7%	31%	28%	21%	13%
June 2005	9%	34%	29%	19%	9%
March 2005	9%	31%	30%	16%	14%
November 2003	11%	35%	28%	14%	13%
April 2003	13%	34%	22%	10%	21%
February 2000	9%	37%	26%	8%	20%
July 1999	8%	36%	27%	12%	18%

Rate_Gov. How would you rate the way that Ed Rendell is handling his job as Governor? Would you say he is doing...

	Excellent job	Good job	Only a fair job	Poor job	Do Not Know
ED RENDELL, as Governor					
August 2006	11%	39%	33%	15%	2%
May 2006	9%	37%	34%	17%	3%
February 2006*	8%	36%	34%	21%	1%
September 2005	5%	36%	38%	18%	3%
June 2005	6%	36%	41%	14%	3%
March 2005	6%	33%	46%	11%	4%
February 2004	6%	31%	44%	13%	7%
November 2003	7%	33%	35%	15%	10%
April 2003	10%	36%	24%	10%	21%

* Asked of all survey respondents regardless of registration status

CNTY. Region of state

August
2006

9%	Philadelphia
12%	Northeast
10%	Allegheny
12%	Southwest
8%	Northwest
30%	Central
19%	Southeast

AGE. What was your age on your last birthday?

August
2006

3%	18-24
9%	25-34
17%	35-44
23%	45-54
20%	55-64
28%	65 and older

EDUC. What was the last grade level of schooling you have completed?

August
2006

4%	Non high school graduate
30%	High school graduate or GED
15%	Some college
11%	Two-year or tech degree
21%	Four year college degree
19%	Postgraduate degree

MAR. What is your current marital status?

August
2006

16%	Single, Never Married
60%	Married
1%	Separated
11%	Divorced
12%	Widow, Widower

LABR. Are you or is any member of your household a member of a LABOR UNION?

August
2006

19%	Yes
80%	No
1%	Do not know

VET. Are you a military veteran?

August
2006
 16% Yes
 84% No

IDEO. Politically speaking, do you consider yourself to be a liberal, a moderate, or a conservative?

<i>March</i>	<i>June</i>	<i>Sept</i>	<i>Nov</i>	<i>Feb</i>	<i>May</i>	<i>August</i>	
<u>2005</u>	<u>2005</u>	<u>2005</u>	<u>2005</u>	<u>2006</u>	<u>2006</u>	<u>2006</u>	
16%	19%	22%	17%	21%	16%	19%	Liberal
40%	42%	38%	42%	41%	43%	38%	Moderate
38%	33%	35%	35%	34%	35%	38%	Conservative
6%	7%	5%	7%	4%	6%	5%	Do not know

PRTY1. Regardless of how you are registered, in politics, as of today, do you think of yourself as a Republican, a Democrat, or an Independent?

<i>July</i>	<i>October</i>	<i>April</i>	<i>August</i>	<i>August</i>	
<u>1999</u>	<u>2000</u>	<u>2003</u>	<u>2004</u>	<u>2006</u>	
22%	20%	27%	24%	20%	Strong Republican
20%	11%	16%	13%	10%	Republican
6%	12%	5%	7%	12%	Lean Republican
6%	11%	5%	4%	5%	Pure Independent
5%	10%	6%	11%	13%	Lean Democrat
19%	11%	18%	12%	11%	Democrat
18%	21%	22%	24%	24%	Strong Democrat
4%	4%	3%	4%	5%	Do not know

ABORT. Do you think that abortion should be...

August
2006
 23% Legal under any circumstances
 56% Legal under certain circumstances
 19% Illegal in all circumstances
 2% Do not know

GUN. Are you a gun owner?

August
2006
 34% Yes
 66% No

GUN2. Generally speaking, do you favor or oppose creating more laws that regulate gun ownership?

August
2006
 37% Strongly favor
 15% Somewhat favor
 14% Somewhat oppose
 27% Strongly oppose
 7% Do not know

Hisp. Are you Hispanic or Latino?

August
2006
4% Yes
96% No

RACE. Which of the following categories best describes your racial background?

August
2006
91% White
9% Non-white

NumA. Including yourself, how many adults 18 years of age or OLDER CURRENTLY live in this household?

August
2006
27% One
55% Two
13% Three
4% Four
1% Five or more

REL. Do you consider yourself to be Catholic, Protestant, Jewish or something else?

August
2006
34% Catholic
41% Protestant
3% Jewish
22% Something Else

BAC. Do you consider yourself to be a born-again Christian or fundamentalist, or not?

August
2006
33% Yes
66% No
1% Do not know

INC1. And, just for statistical purposes, we need to know if your total family income is above or below \$30,000 per year?

August
2006
13% Under \$25,000
12% \$25-\$35,000
15% \$35-50,000
20% \$50-75,000
16% \$75-100,000
18% Over \$100,000
6% Do Not Know

DONE. Sex of respondent:

August
2006
43% Male
57% Female